



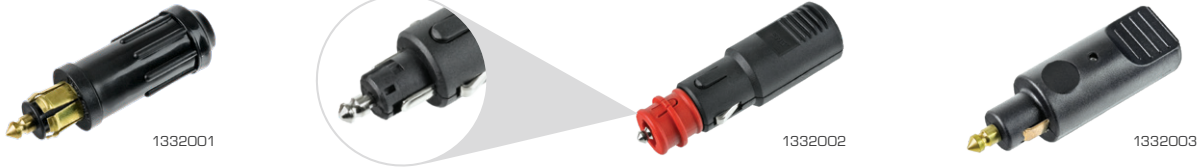
## Miscellanies

DIN/Cigar Connectors 104

Multi Pin Connectors 106



- DIN and universal cigar size available.
- Brass contacts for greater conductivity.
- 1332002 incorporates strain relief.
- 1332002 removable cap allows both DIN and cigar connections.



### DIN/Cigar Plugs

Part No.	Current Rating (A)	Type	Housing	Notes
1332001	12	DIN	Thermoplastic	
1332002	12	Cigar/DIN	Thermoplastic	Incorporates strain relief
1332003	8	DIN	Thermoplastic	



### Adaptors & Extension Cables

Part No.	Description	Current Rating (A)	Cable (cm)	Housing
1334001	Cigar/DIN plug to cigar socket. 6-24V	2 x 5	20	Thermoplastic
1334003	Battery terminal clips to cigar socket	8	95	Thermoplastic
1334004	Cigar/DIN plug to DIN socket	8	385	Thermoplastic
1334005	Cigar/DIN plug to cigar socket	8	60 - 300	Thermoplastic



## DIN/Cigar Sockets

Part No.	Current Rating (A)	Type	Voltage	Cap Style	Terminal Style	Housing	Mounting $\phi$ (mm)
1331001	12	DIN	—	Spring Loaded	Parallel	Brass	18
1331002	12	DIN	—	—	Parallel	Brass	18
1331003	12	DIN	—	Press Fit	Parallel	Brass	18
1331004	12	DIN	—	Spring Loaded	Offset	Brass	18
1331011	12	DIN	—	—	Parallel	Thermoplastic	18
1331005	12	DIN	—	—	Screw	Aluminium	—
1331006	16 total	DIN	—	—	Parallel	Thermoplastic	—
1331007	16	DIN	—	—	Parallel	Thermoplastic	—
1331008	15	Cigar	—	Press Fit	Offset	Stainless Steel	28
1331009	—	Cigar	12	—	Offset	Stainless Steel	28
1331010	20	Cigar	—	Press Fit	Offset	Stainless Steel	28



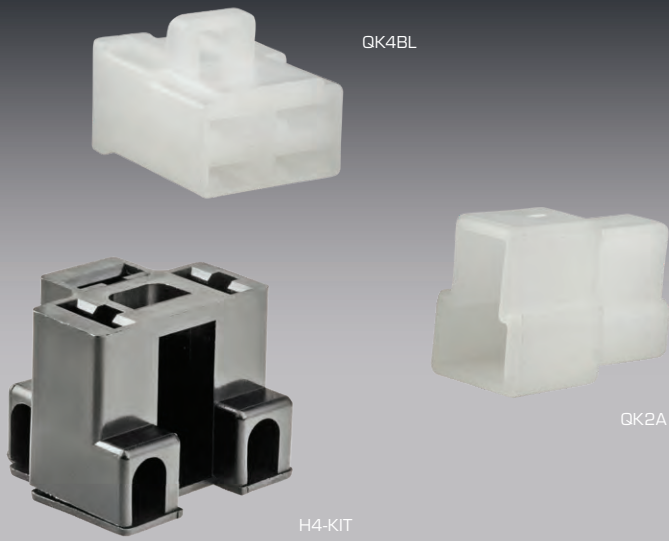
## Sockets & Mounts

Part No.	Description	Voltage	Output
1336000	Volt Meter. Displays 6–29.9V	12 – 24	—
1336001	Socket – Power (cigar)	12 – 24	16A
1336002	Socket – Engel	12 – 24	15A
1336003	Socket – 5V Twin USB	12 – 24	2 x 2.1A
1336M01	Surface Mount – Single		
1336M02	Surface Mount – Double		
1336M03	Surface Mount – Triple		
1336M05	Panel Mount – Double		
1336M06	Panel Mount – Single		
1336010	Plug & Socket – 2 Pin. S/Steel	12 – 24	20A



# Miscellanies

## Multi Pin Connectors



- All connectors are polarised to prevent mismatching.
- QL connectors feature a positive locking latch which automatically engages on mating.
- QK connectors feature panel mounting tabs.
- Ideal for low voltage power supply needs.
- Universal EFI connector kit.



### QL Series Kits – Kits

Cavities	1	2	Kit contents
Part No.	<b>QL1</b>	<b>QL2</b>	1 x Receptacle 1 x Plug Tabs and receptacles according to cavities



### QL Series – Connectors – 8mm

	1 Cavity	2 Cavities
Mating Latch	Yes	Yes
Receptacles	<b>QL1A/10</b>	<b>QL2A/10</b>
Plugs	<b>QL1B/10</b>	<b>QL2B/10</b>

Supplied in packs of 10.



### QL Series – Contacts – 8mm

Pack Qty – 100	Blade Size (mm)	Type	Wire Size (mm²)
<b>66047BL2/100</b>	8	Receptacle	3.0 – 5.0
<b>66057BL2/100</b>	8	Tab	3.0 – 5.0



## QK Series Kits – Kits

Cavities	1	2	3	4	6	8	Kit contents 1 x Receptacle 1 x Plug Tabs and receptacles according to cavities
Part No.	<b>QK1</b>	<b>QK2</b>	<b>QK3</b>	<b>QK4</b>	<b>QK6</b>	<b>QK8</b>	



QK1ASL



QK1B



QK6AL



QK8BLT

## QK Series – Connectors – 6.3mm

Mating Latch	1 Cavity		2 Cavities		3 Cavities	4 Cavities	6 Cavities	8 Cavities
	Yes	No	Yes	No	Yes	Yes	Yes	Yes
Receptacles	<b>QK1ASL/10</b>	<b>QK1A/10</b>	<b>QK2ASL/10</b>	<b>QK2A/10</b>	<b>QK3AL/10</b>	<b>QK4AL/10</b>	<b>QK6AL/10</b>	<b>QK8AL/10</b>
Plugs	<b>QK1BSL/10*</b>	<b>QK1B/10</b>	<b>QK2BSL/10</b>	<b>QK2B/10</b>	<b>QK3BL/10</b>	<b>QK4BL/10</b>	<b>QK6BLT/10</b>	<b>QK8BLT/10</b>

Supplied in packs of 10.

\* **QK1BSL/10** housing requires **605001BL2** receptacle.



604501BL2



604502BL2



605001BL2



605501BL2, 605502BL2

## QK Series – Contacts – 6.3mm

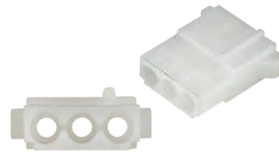
Pack Qty – 100	Blade Size (mm)	Type	Wire Size (mm <sup>2</sup> )	Locking Tab
<b>604501BL2/100</b>	6.3	Receptacle	2.0 – 3.0	Yes
<b>604502BL2/100</b>	6.3	Receptacle	1.0 – 2.0	Yes
<b>605001BL2/100</b>	6.3	Receptacle	1.0 – 1.5	Yes
<b>605501BL2/100</b>	6.3	Tab	2.0 – 3.0	Yes
<b>605502BL2/100</b>	6.3	Tab	1.5 – 2.0	Yes



# Miscellanies



1-480305-0



1-480303-0

## TE MATE-N-LOK – Connectors

Part No.	Type	Cavities
1-480305-0	Receptacle	3
1-480303-0	Plug	3



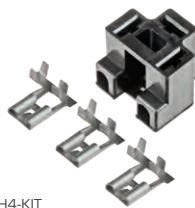
163304-2



163305-2

## TE MATE-N-LOK – Contacts

Pack Qty – 10	Type	Wire Size (mm <sup>2</sup> )
163304-2/10	Socket	0.5 – 1.0
163305-2/10	Pin	0.5 – 1.0



H4-KIT



3029

## H4 Sealed Beam Connectors

Part No.	Description	Wire Size (mm <sup>2</sup> )
H4-KIT	Kit contains 1 x Connector, 3 x 8mm Flag Contacts – Tin-plated	2.1
3029	Pre-wired. Bronze contacts. 200mm wire length	



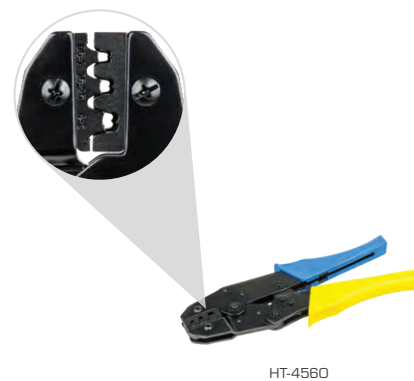
## Temperature Sender Kit

Pack Qty - 10	Description	Blade Size (mm)	Wire Size (mm <sup>2</sup> )
<b>TSKIT/10</b>	Kits contain 1 x Connector, 1 x 6.3mm Contact	6.3	0.8 - 1.5



## EFI Connector Kit

Part No.	Description	Kit Contents
<b>EFI-2-QR</b>	Quick release connector kit suiting injectors & vehicle sensors	1 x Connector housing 1 x Rubber Extension 2 x Sockets (925590-2)



## Crimping Tools – QK & QL Contacts

Part No.	Description	Crimp Range (mm <sup>2</sup> )
<b>HT-4220</b>	—	0.2–0.3, 0.3–0.5, 0.5–0.8, 0.8–1.3, 1.3–2.0
<b>HT-4560</b>	Ratcheting	0.5–1, 1.5–2.5, 4–6

